



CLCC1 Polyclonal Antibody

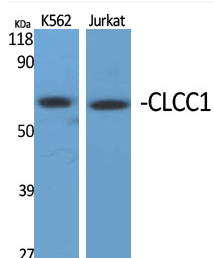
Catalog No	YP-Ab-16402
Isotype	IgG
Reactivity	Human;Rat;Mouse;
Applications	WB;IF;ELISA
Gene Name	CLCC1
Protein Name	Chloride channel CLIC-like protein 1
Immunogen	The antiserum was produced against synthesized peptide derived from human CLCC1. AA range:391-440
Specificity	CLCC1 Polyclonal Antibody detects endogenous levels of CLCC1 protein.
Formulation	Liquid in PBS containing 50% glycerol, 0.5% BSA and 0.02% sodium azide.
Source	Polyclonal, Rabbit,IgG
Purification	The antibody was affinity-purified from rabbit antiserum by affinity-chromatography using epitope-specific immunogen.
Dilution	Western Blot: 1/500 - 1/2000. Immunofluorescence: 1/200 - 1/1000. ELISA: 1/40000. Not yet tested in other applications.
Concentration	1 mg/ml
Purity	≥90%
Storage Stability	-20°C/1 year
Synonyms	CLCC1; KIAA0761; MCLC; Chloride channel CLIC-like protein 1; Mid-1-related chloride channel protein 1
Observed Band	62kD
Cell Pathway	Endoplasmic reticulum membrane ; Multi-pass membrane protein . Golgi apparatus membrane ; Multi-pass membrane protein . Nucleus membrane ; Multi-pass membrane protein . Within the endoplasmic reticulum (ER), localizes to the mitochondria-associated ER membrane, a zone of contact between the ER and mitochondrial membranes. .
Tissue Specificity	Expressed in the retina of the eye, with extensive expression in the lamina cribrosa, optic nerve, ganglion cell layer, inner nuclear layer, outer nuclear layer and retinal pigment epithelium.
Function	function:Seems to act as a chloride ion channel.,similarity:Belongs to the chloride channel MCLC family.,
Background	function:Seems to act as a chloride ion channel.,similarity:Belongs to the chloride channel MCLC family.,
matters needing attention	Avoid repeated freezing and thawing!



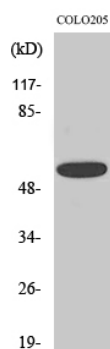
Usage suggestions

This product can be used in immunological reaction related experiments. For more information, please consult technical personnel.

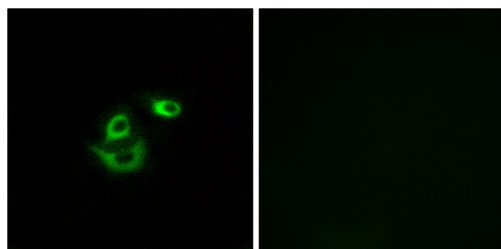
Products Images



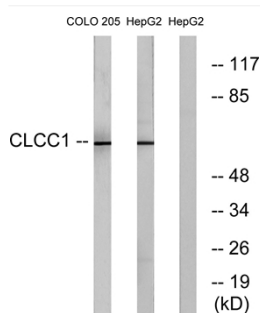
Western Blot analysis of various cells using CLCC1 Polyclonal Antibody diluted at 1:1000



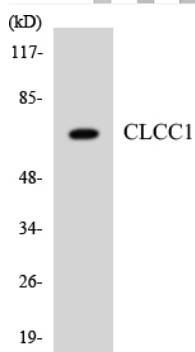
Western Blot analysis of HepG2 cells using CLCC1 Polyclonal Antibody diluted at 1:1000



Immunofluorescence analysis of A549 cells, using CLCC1 Antibody. The picture on the right is blocked with the synthesized peptide.



Western blot analysis of lysates from COLO and HepG2 cells, using CLCC1 Antibody. The lane on the right is blocked with the synthesized peptide.



Western blot analysis of the lysates from HT-29 cells using CLCC1 antibody.